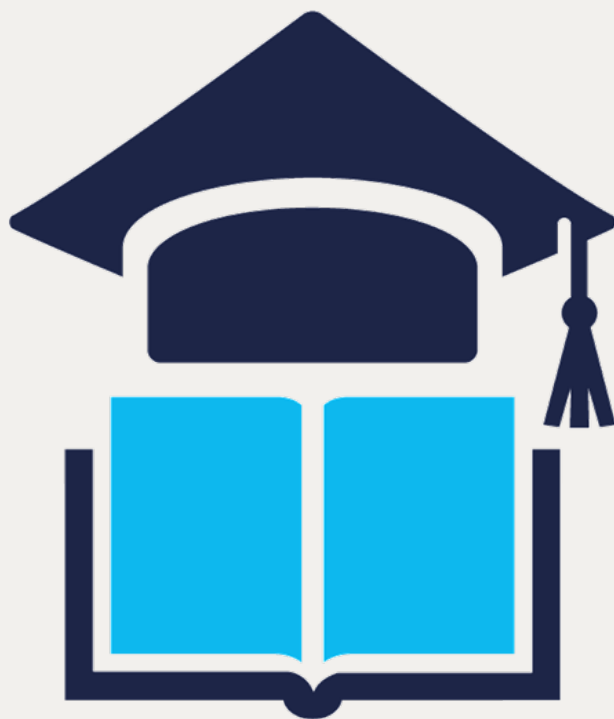




September
2019

CPR Invest - **Education**
A good equation to combine return potential with
responsibility

CPR Invest Education



AN INVESTMENT THEME
ACCOMPANYING US
THROUGHOUT OUR
LIVES

SEEKING
OPPORTUNITIES WITHIN
THE WHOLE EDUCATION
ECOSYSTEM

A RESPONSIBLE
INVESTMENT
APPROACH



1 EDUCATION MATTERS

Education is key to building a fair society. The United Nations made Education one of its Sustainable Development Goals (SDG), and is also the key to unlocking others such as no poverty, healthier life and gender equality.

2 A BROAD AND COMPLETE ECOSYSTEM

The universe covers the entire education ecosystem and timeline, supported by 3 pillars:

Content and tools: publishing, software, media, educational technology

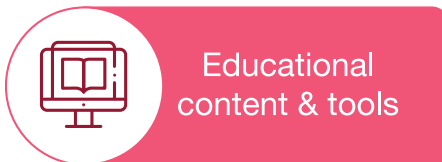
Facilities: school in management, professional integration

Services: accommodation, cafeteria, transportation

“ Education is the most powerful investment the world can make in its future. ”

(United Nations Education Commission)

The 3 pillars of the education universe



! Risks

- Capital loss risk: the Fund does not offer any performance or capital guarantee. Initial capital invested may not be returned in full.
- Equity and market risks (include small capitalisation and emerging markets): value of the Fund's investments could decrease due to movements in financial markets.
- Liquidity risk: the risk that a financial market, when volumes traded are low or if there are tensions on such market, might not be able to absorb the sell (or buy) volumes without causing the price of the assets to significantly drop (or rise).
- Counterparty risk: this is the risk of default of a market participant preventing it from honoring its commitments in respect of your portfolio.

For further information about risks, please refer to the Product Highlights Sheet (PHS) and the Prospectus.

+ Key Features

- A strong investment theme, driven by long-term trends: education is an unchanging foundation of our societies
- A broad investment universe to encompass all activities related to education
- A conviction-based stock selection

3 STRONG GROWTH POTENTIAL

Education is a theme supported by long-term drivers (e.g. population growth, middle class growth, sociocultural evolution) prompting an increasing demand for early and continuing education. We are a pioneer in this theme.

About CPR AM

A fully-owned subsidiary of Amundi, CPR AM draws on a wide range of its expertise (equities, convertible bonds, asset allocation, fixed income) to offer flexible, effective and dynamic investment solutions, specifically tailored to the needs of its clients. As at end of June 2019, CPR AM has more than €49bn assets under management.



CPR Invest Education

Key Terms

CPR Invest - Education

Investment Objective	To outperform global equity markets over a long-term period (minimum of five years) by investing in international equities involved in the entire education ecosystem, while integrating Environmental, Social and Governance (E, S, and G – or, when taken together, ESG) criteria in the investment process. Education is the 4th United Nations Sustainable Development Goal* (SDG).		
Management Company	CPR Asset Management		
Singapore Representative	Amundi Singapore Limited		
Depositary/ Admin. Agent	CACEIS Bank, Luxembourg Branch		
Cut-off Time for dealing	By 2 p.m Luxembourg time on a Valuation Day or in the case may be, an earlier cut-off time applicable by the relevant distributor.		
Fund Reference Currency	Euro		
Share Classes	A2 USDH - Acc		A2 SGDH - Acc
ISIN Code	LU1989763005		LU1989773731
Valuation Frequency	Daily		
Currency Hedge	Yes		
Type of Shares	Accumulation		
Min. initial Subscription	Nil		
Subscription Fee	Up to 5%		
Management Fee	Up to 1.80% p.a.		
Redemption Fee	Nil		
Max. Admin. Charges	0.30% p.a.		

*Education: Goal 4 of the Sustainable Development Goals of the United Nations: «Obtaining a quality Education».

Please consult the Singapore Prospectus and Product Highlights Sheet which are available and may be obtained from Amundi Singapore Limited for a comprehensive explanation on all fees and risks related to the Fund.

Legal information

This document contains information about CPR Invest - Education (the "Fund"), a sub-fund of CPR Invest, an undertaking for collective investment in transferable securities existing under Part I of the Luxembourg law of 17 December 2010, organised as a société d'investissement à capital variable and registered with the Luxembourg Trade and Companies Register under number B-189.795 and having its registered office at 5, allée Scheffer, L-2520 Luxembourg.

This document is provided for information purposes only and does not constitute an offer or solicitation to purchase or sell Shares in the Fund. The Singapore Prospectus and the Product Highlights Sheet of the Fund are available and may be obtained from Amundi Singapore Limited or the Fund's authorised distributors. Investors should read the relevant Singapore Prospectus and the Product Highlights Sheet before deciding to invest in the Fund. Past performance and any forecasts made are not indicative of future performance of the Fund. Any opinion or view presented is subject to change without notice. The information on this document is intended for general circulation without taking into account the specific investment objectives, financial situation or particular needs of any particular investor. An investor may wish to seek advice from a financial adviser regarding the suitability of the Fund, taking into account the specific investment objectives, financial situation or particular needs of any person in receipt of the recommendation, before making a commitment to purchase Shares in the Fund. In the event an investor chooses not to do so, the investor should consider whether the Fund is suitable for him. Some of the information contained herein has been obtained from sources believed to be reliable but has not been independently verified, although Amundi and its affiliated companies believe it to be fair and not misleading.

As the Fund may invest in financial derivatives as part of the investment strategy, it will be subject to risks associated with such investments. Additional risk factors are described in the Singapore Prospectus. Investments in the Fund are subject to investment risks, including the possible loss of the principal amount invested. Value of the Shares in the Fund and the income accruing to the Shares, if any, may fall or rise. It should not be assumed that investments in the securities identified were or will always be profitable. We do not accept any liability whatsoever whether direct or indirect that may arise from the use of information contained in this document. This document is not intended for citizens or residents of the United States of America or to any «U.S. Person», as this term is defined in SEC Regulation S under the U.S. Securities Act of 1933 and in the Prospectus of the Fund.

The information contained in this document is deemed accurate as at September 2019. This advertisement or publication has not been reviewed by the Monetary Authority of Singapore.

Daily NAV calculation

 www.amundi.com.sg

Amundi Singapore Limited Company Registration No. 198900774E
80 Raffles Place #23-01, UOB Plaza 1, Singapore 048624
Tel: (65) 6536 4822



Amundi
ASSET MANAGEMENT